



ARKANSAS NATURAL RESOURCES COMMISSION

101 East Capitol Avenue, Suite 350 Little Rock, AR 72201

Phone: (501) 682-1611 Fax: (501) 682-3991

www.anrc.arkansas.gov

Act 1426 of 2001 Metering devices

- ◆ According to Act 1426, any well constructed after September 30th, 2001 to withdraw ground water from a sustaining aquifer, shall be equipped with a properly functioning metering device.
- ◆ After September 30th, 2006 any well withdrawing ground water from a sustaining aquifer shall have a properly functioning metering device.
- ◆ The aquifers that will be affected are “sustaining aquifers”. These aquifers include the Sparta, Memphis, Cockfield, Cane River, Carrizo, Wilcox, Nacatoch, Roubidoux and Gunter. The alluvial aquifer is not considered a “sustaining aquifer”.
- ◆ Domestic Wells are exempt.

Contact: ANRC Ground Water Section
101 East Capitol Avenue, Suite 350
Little Rock, AR 72210
Phone: (501) 682-3900 Fax: (501) 682-3991
E-mail: todd.fugitt@arkansas.gov
E-mail: mike.guess@arkansas.gov

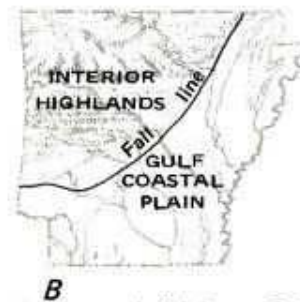
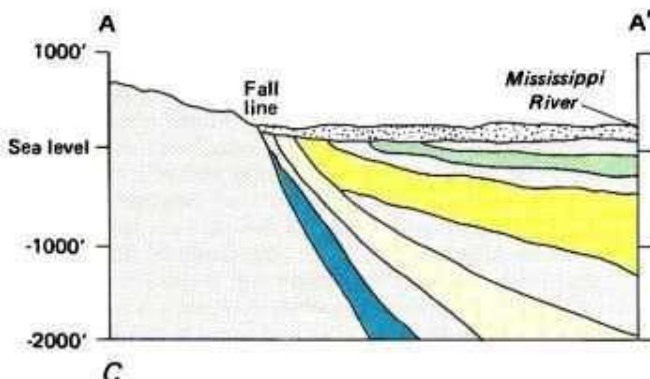
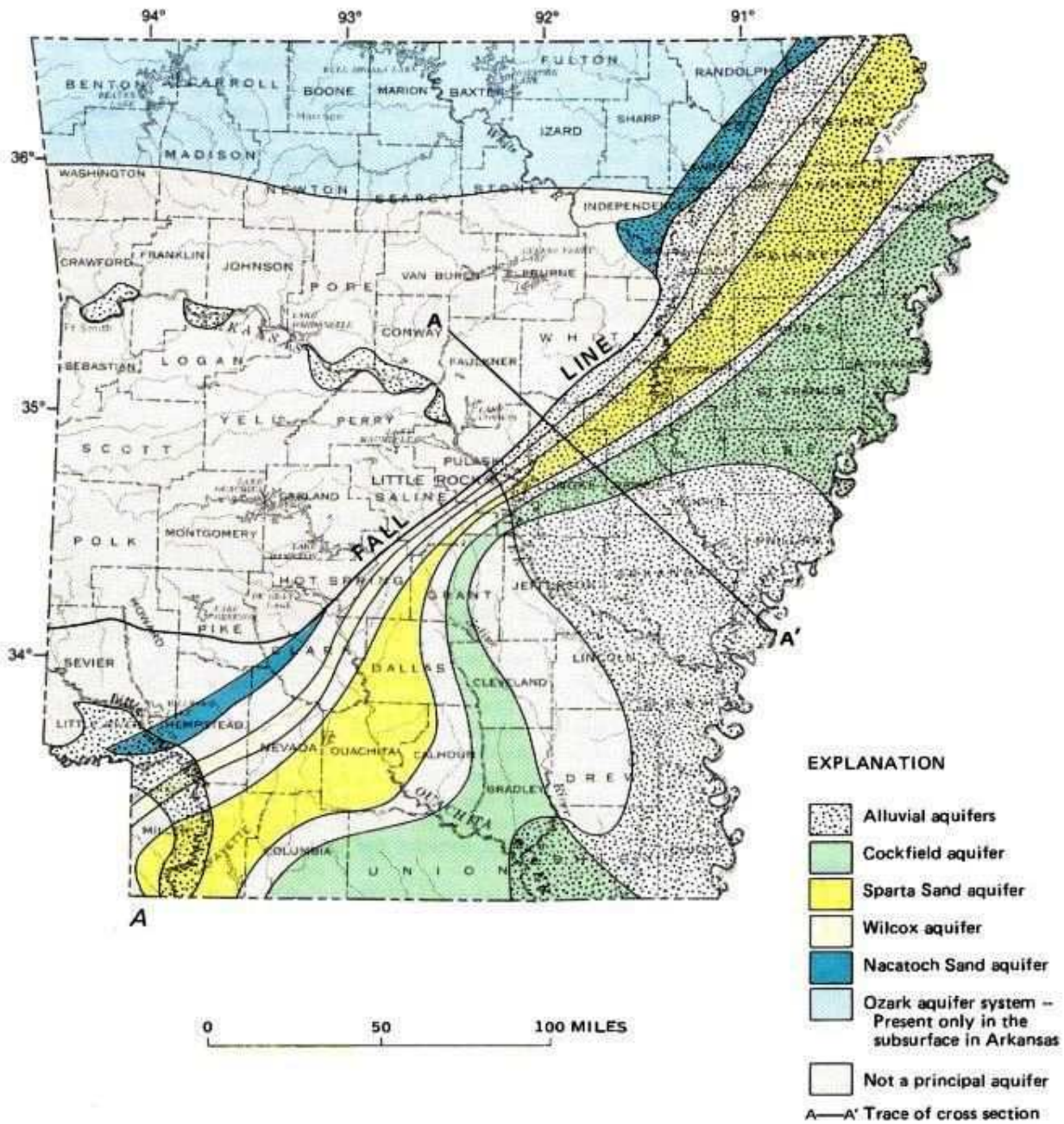


Figure 1. Principal aquifers in Arkansas. **A**, Geographic distribution. **B**, Physiographic diagram and divisions. **C**, Generalized cross section (A-A'). (See table 2 for a more detailed description of the aquifers. Sources: A,C, Ludwig, 1972 and compiled by A. H. Ludwig from U. S. Geological Survey files. B, Raisz, 1954.)