



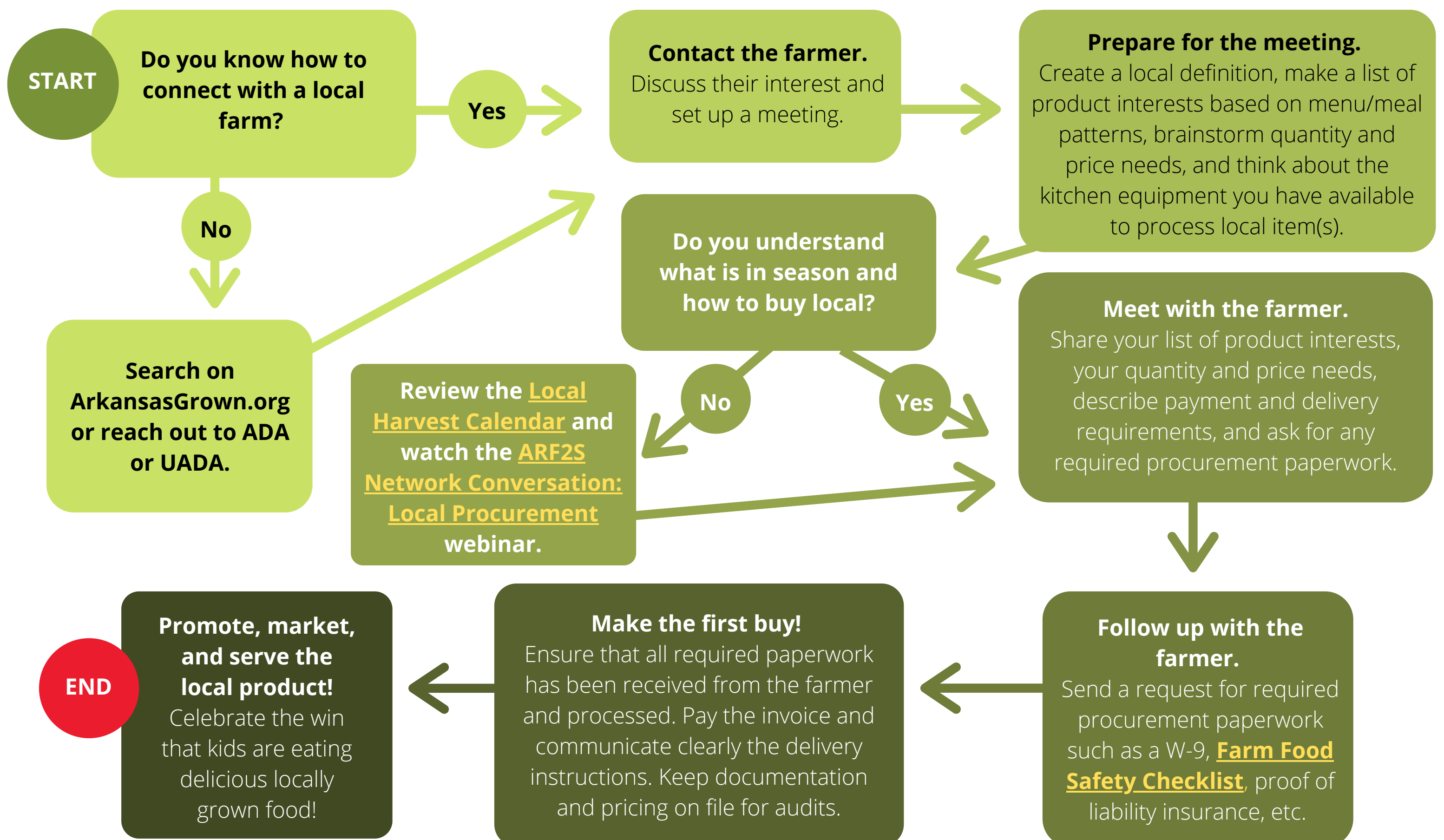
ARKANSAS Farm to School

Child Nutrition Flowchart: Buying Local

Are you a school or school district that is interested in buying local? The following flowchart provides a step-by-step recommendation on how to build a connection and initiate potential sales with a local farm.

For additional help and support you may contact:

- Shannon Newerth-Henson, Arkansas Department of Agriculture (ADA), shannon.henson@agriculture.arkansas.gov, (501) 442-5710
- Julia Fryer, University of Arkansas System Division of Agriculture (UADA), jfryer@uada.edu, (501) 671-2181



For more information, and to sign up for the bi-weekly newsletter visit arfarmtoschool.org.

