



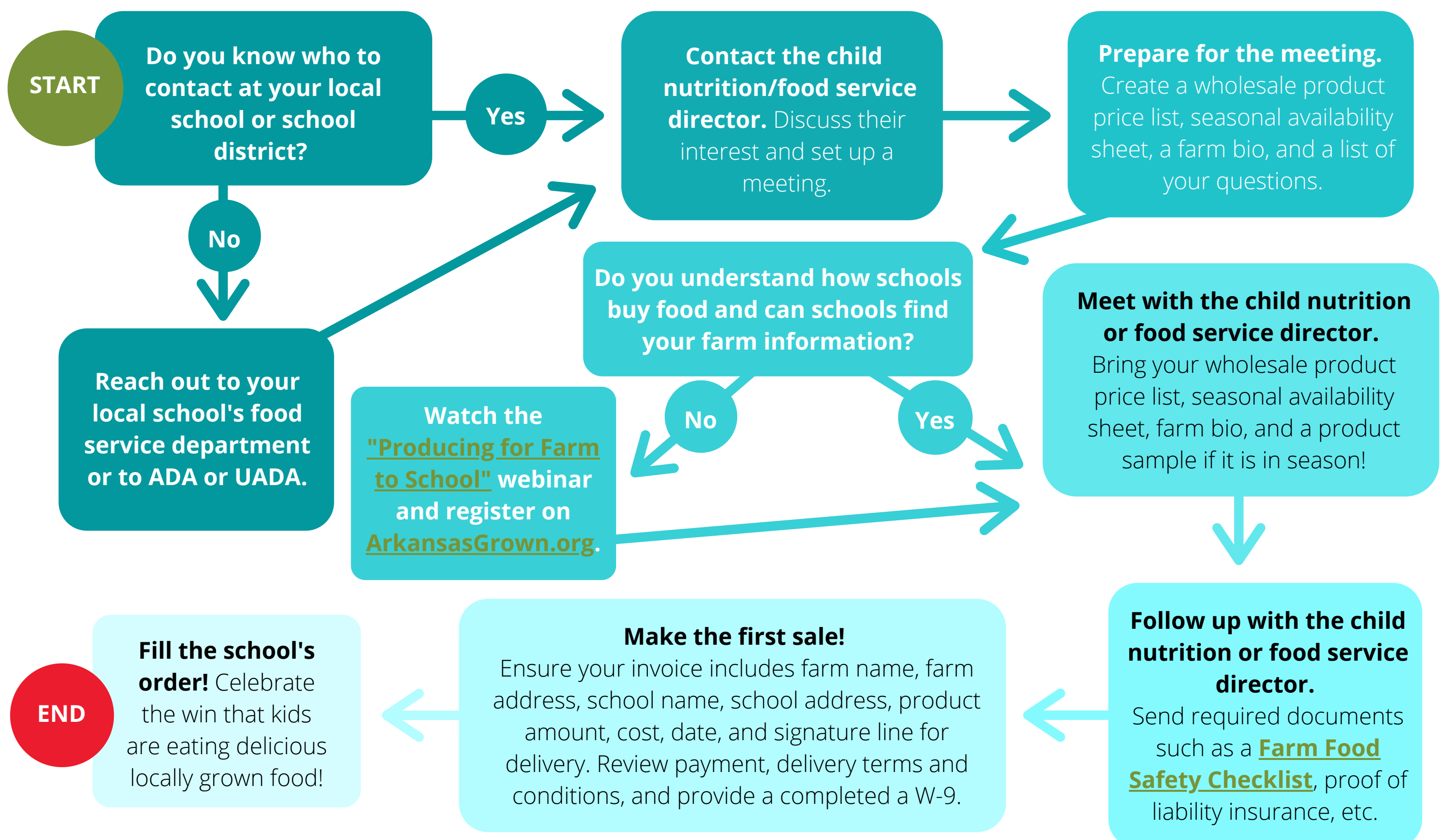
ARKANSAS FarmtoSchool

Farmer Flowchart: Selling to Schools

Are you a farmer that is interested in selling to a school? The following flowchart provides a step-by-step recommendation on how to build a connection and initiate potential sales with a local school/school district.

For additional help and support you may contact:

- Shannon Newerth-Henson, Arkansas Department of Agriculture (ADA), shannon.henson@agriculture.arkansas.gov, (501) 442-5710
- Julia Fryer, University of Arkansas System Division of Agriculture (UADA), jfryer@uada.edu, (501) 671-2181



Flowchart adapted from Georgia Organic's Farmer Guide to Selling to Schools and Nebraska Department of Education's Getting Started with Farm to School (Farmers).

For more information, and to sign up for the bi-weekly newsletter visit arfarmtoschool.org.

