

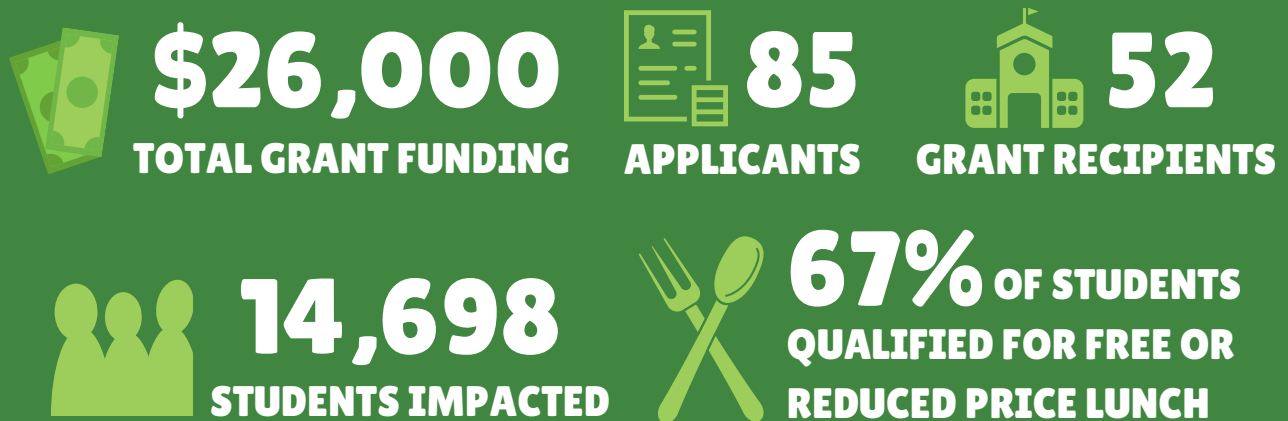
# ARKANSAS SCHOOL GARDEN GRANT PROGRAM



## PROGRAM IMPACTS, 2020-2021

### BACKGROUND

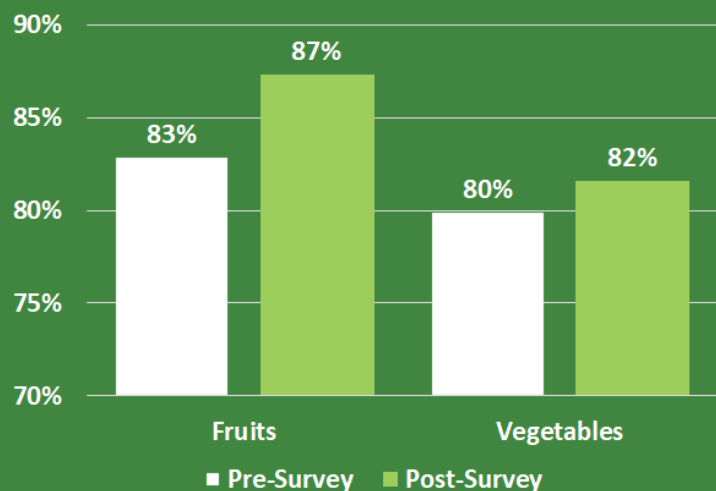
The Arkansas School Garden Grant Program was established in 2020 by the Arkansas Department of Agriculture to help public and private K-12 schools, early childhood education facilities, and alternative learning environments start or expand gardens on school grounds. The grant program was developed with funding from the U.S. Department of Agriculture's (USDA) Specialty Crop Block Grant Program to increase production of specialty crops (fruits, vegetables, tree nuts, dried fruits, horticulture, and nursery crops) in school gardens.



### PERCENTAGE OF STUDENTS WHO ATE FRUITS OR VEGETABLES MORE THAN ONCE IN THE LAST SEVEN DAYS

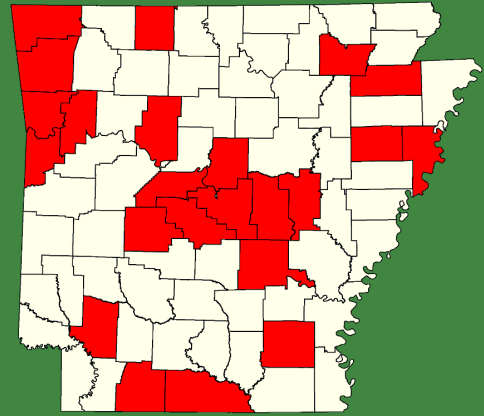
As required by the grant, schools conducted surveys with students who participated in the school garden program.

Students filled out a pre-survey and a post-survey to understand how participating in the garden program impacted their consumption of fruits and vegetables.



## ARKANSAS SCHOOL GARDEN GRANT RECIPIENTS, 2020-2021

A total of 52 schools, early childhood education facilities, and alternative learning environments were located across 23 counties in Arkansas.



- ALLPS School of Innovation, Fayetteville
- Alma High School, Alma
- Alma Kiddie Kollege, Alma
- Anne Watson Elementary, Bigelow
- ARESC Preschool, Pine Bluff
- Arkansas Consolidated High School, Alexander
- Cabot Freshman Academy, Cabot
- Carolyn Lewis Elementary, Conway
- Cedarville High School, Cedarville
- Charleston Middle School, Charleston
- Columbia Christian School Early Childhood Education Center, Magnolia
- Crossroads West, Atkins
- First Baptist Christian School, Rogers
- Greenbrier Eastside Elementary, Greenbrier
- Greenwood Preschool Center, Greenwood
- Hazen High School, Hazen
- Health Wellness and Environmental Studies Elementary, Jonesboro
- Helen Tyson Middle School, Springdale
- Hillcrest Schools, Strawberry
- Hope Academy of Public Service, Hope
- Hot Springs Child Care Center, Hot Springs
- Hugh Goodwin Elementary, El Dorado
- Indian Hills Elementary, North Little Rock
- Jacksonville Lighthouse Elementary, Jacksonville
- James R. Tate Elementary, Van Buren
- John Tyson Elementary School, Springdale
- Klassic Kidz, Inc., Pine Bluff
- Lake Nixon Outdoor Preschool, Little Rock
- Mann Magnet, Little Rock
- Math Science Technology Magnet School, Marion
- McNair Middle, Fayetteville
- Milestones Services, Inc., Conway
- Miss Polly's Learning Center, Wynne
- Monticello Middle School, Monticello
- Nettleton Junior High, Jonesboro
- Nettleton STEAM, Jonesboro
- Norphlet Middle School, Norphlet
- North Little Rock Middle School, North Little Rock
- Omaha Elementary, Omaha
- Ozark Junior High, Ozark
- Pea Ridge High School, Pea Ridge
- Peek A Boo, Elkins
- Pine Bluff High School, Pine Bluff
- Pulaski County Juvenile Detention Center, Little Rock
- Pulaski Heights Elementary, Little Rock
- Retta Brown ABC, El Dorado
- Robert L. Davis Elementary, Alexander
- Valley View High School, Jonesboro
- Van Buren Kiddie Kollege, Van Buren
- Vandergriff Elementary, Fayetteville
- White Hall High School, White Hall
- Wynne Junior High School, Wynne